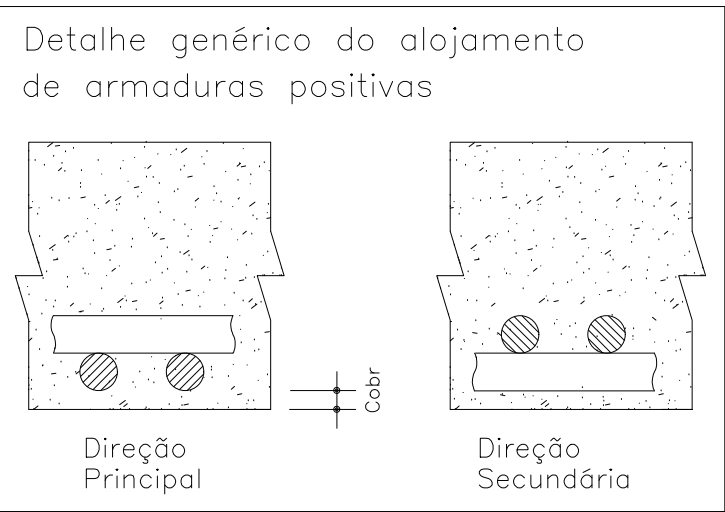
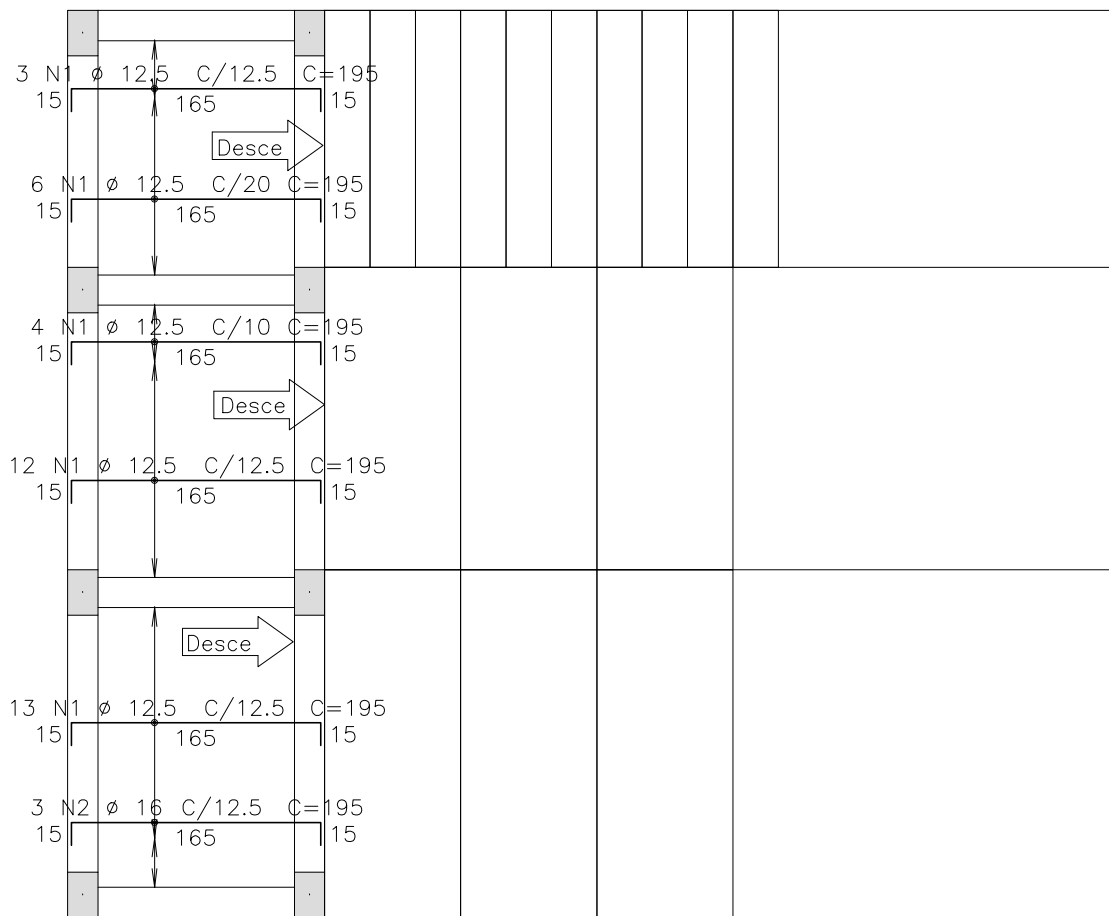


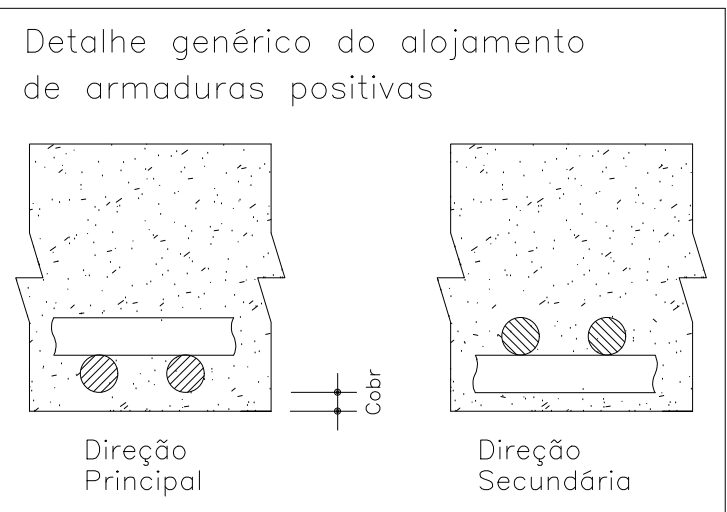
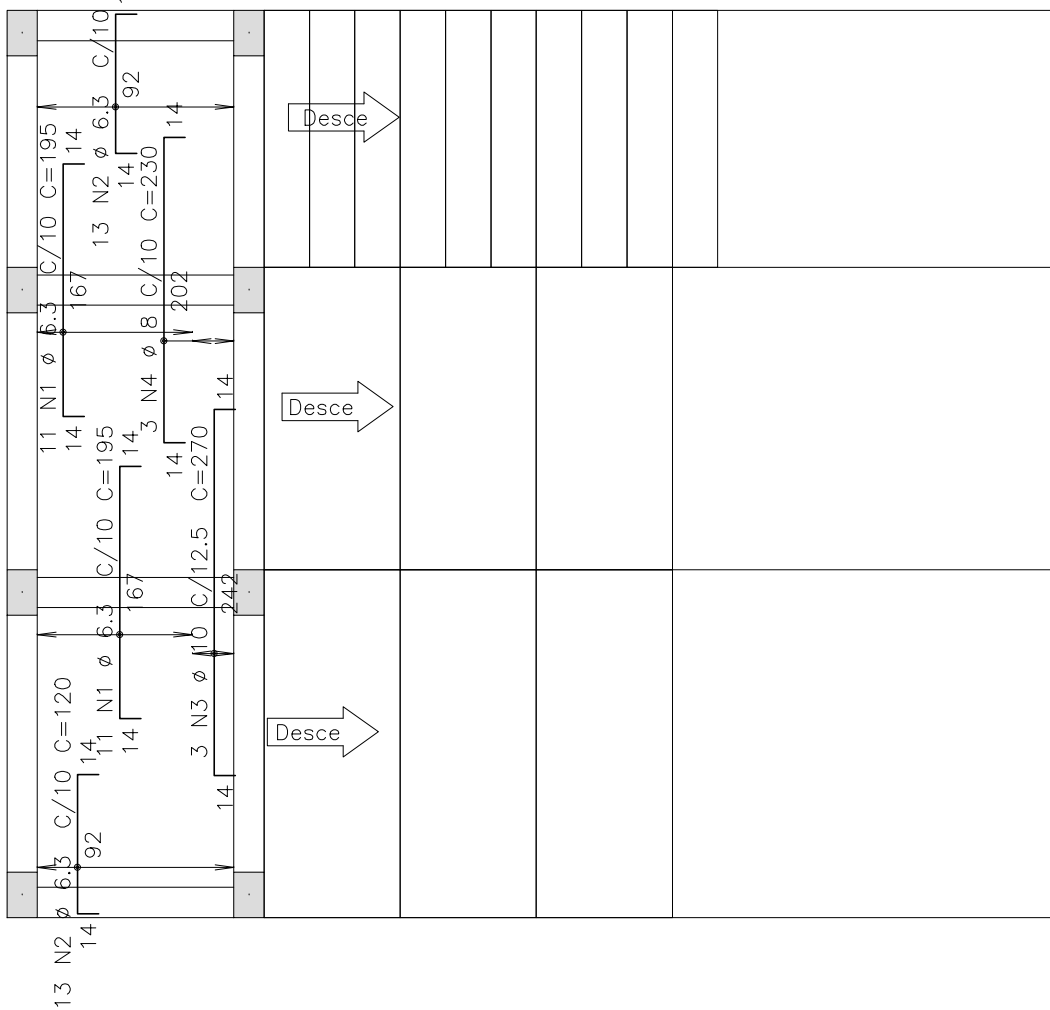
NIVEL RUA – Armadura negativa horizontal

1X



NIVEL RUA – Armadura negativa vertical

1X

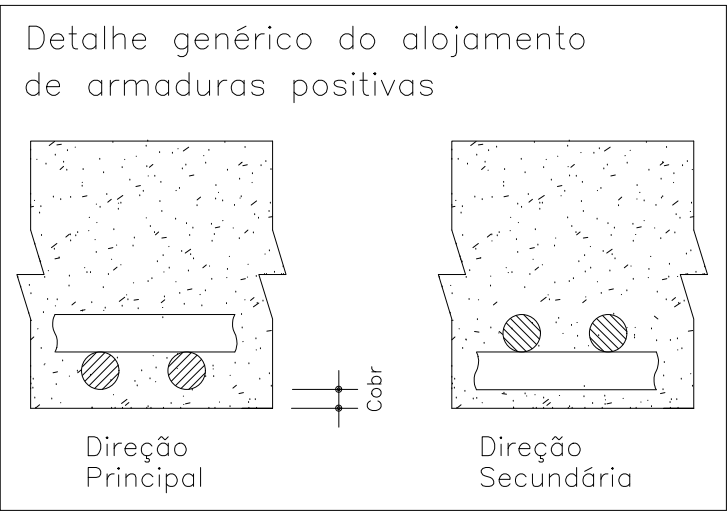
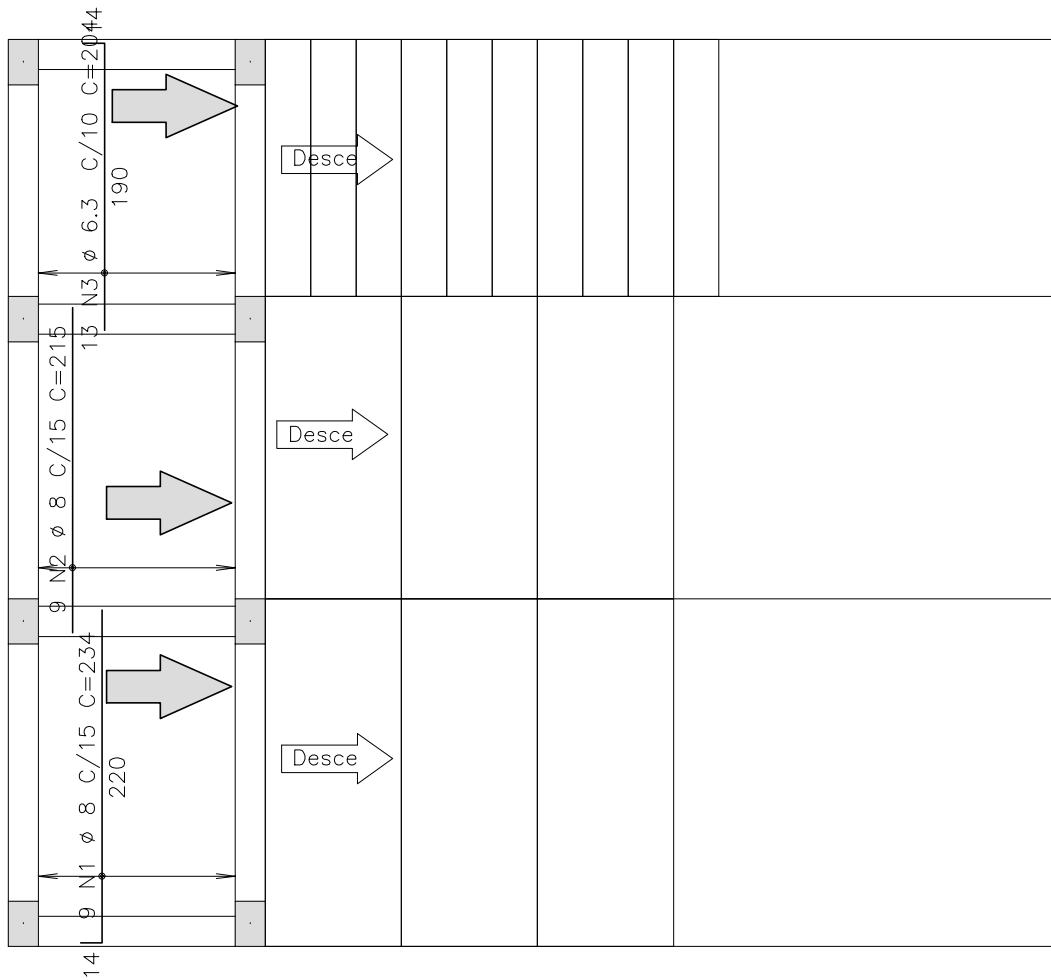


AÇO	POS	BIT (mm)	QUANT	COMPRIMENTO	
				UNIT (cm)	TOTAL (cm)
NIVEL RUA – Armadura de punção					
50A	1	6.3	15	128	1920
NIVEL RUA – Armadura negativa horizontal					
50A	1	12.5	38	195	7410
50A	2	16	3	195	585
60B	3	5	1	1140	1140
NIVEL RUA – Armadura negativa vertical					
50A	1	6.3	22	195	4290
50A	2	6.3	26	120	3120
50A	3	10	3	270	810
50A	4	8	3	230	690
NIVEL RUA – Armadura positiva horizontal					
50A	1	6.3	53	180	9540
NIVEL RUA – Armadura positiva vertical					
50A	1	8	9	234	2106
50A	2	8	9	215	1935
50A	3	6.3	13	204	2652

RESUMO AÇO CA 50-60				
AÇO	BIT (mm)	COMPR (m)	PESO (kg)	
60B	5	11	2	
50A	6.3	215	53	
50A	8	47	19	
50A	10	8	5	
50A	12.5	74	71	
50A	16	6	9	
Peso Total		60B =	2 kg	
Peso Total		50A =	157 kg	

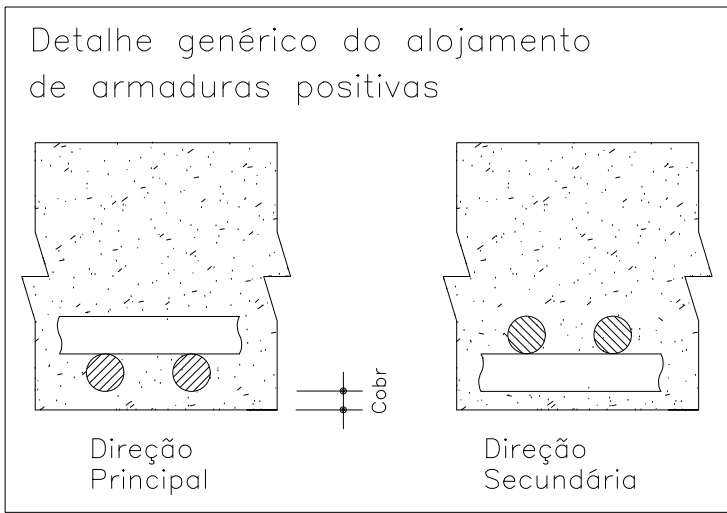
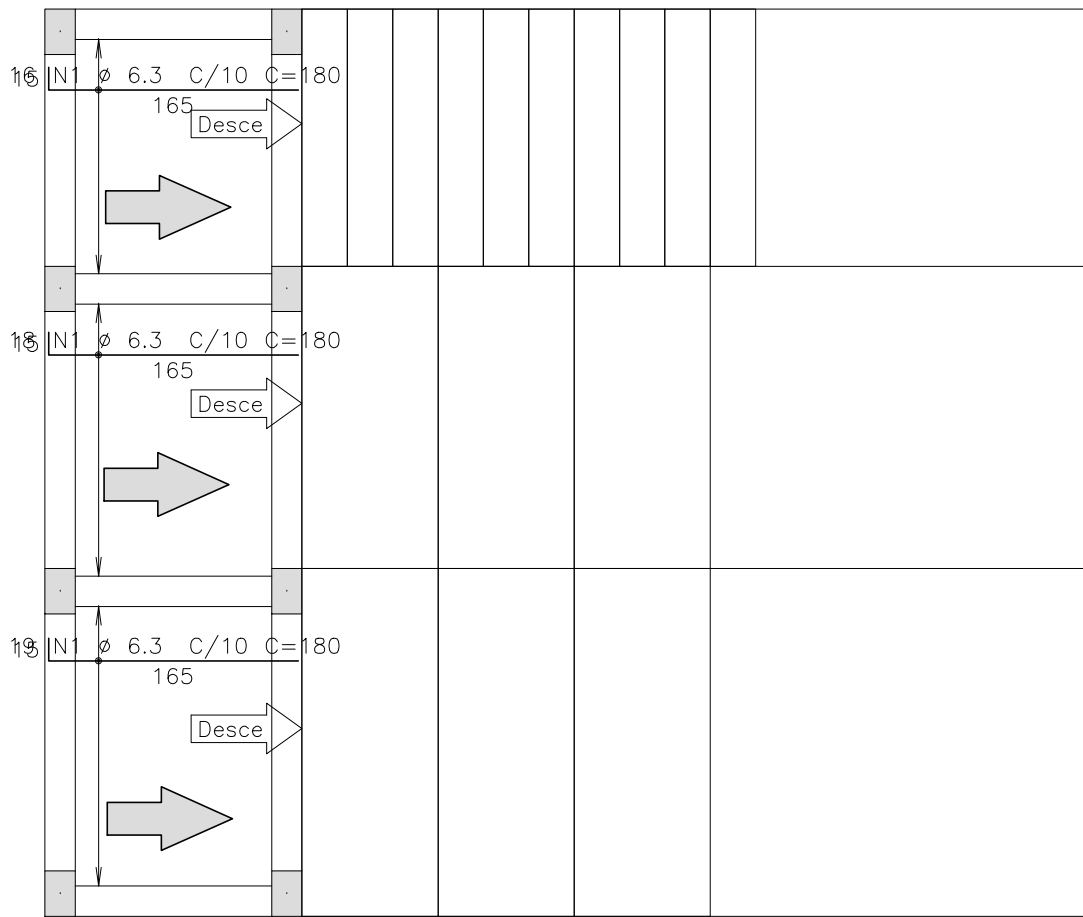
NIVEL RUA – Armadura positiva vertical

1X



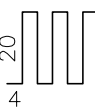
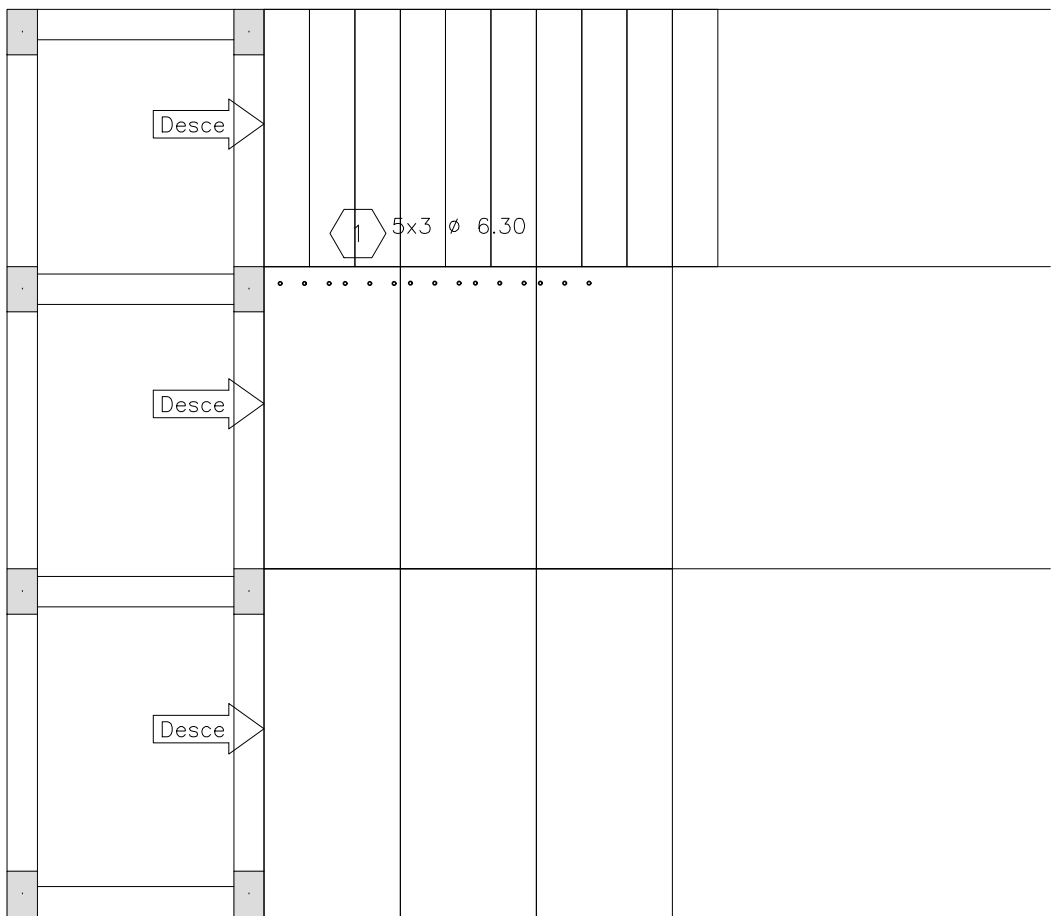
NIVEL RUA – Armadura positiva horizontal

1X



NIVEL RUA – Armadura de punção

1X



Detalhe 15 N1 Ø 6.3 C=128

O acesso ao Modelo Estrutural em dimensão pode ser executado pelo QR CODE ao lado, podendo acessar via celulares, tablets e quaisquer outros dispositivos.

Schuring & Schuring Ltda.
Escritório Técnico B.E.SCHURING – Projetos de Engenharia
Av. XV de Novembro, 489 – Porto Zo. Andar – Cuiabá MT
Fone:(065) 321 9959 – Fax:(065) 623 5066 – Email – schuring@terra.com.br

PROJETO: PREFEITURA MUNICIPAL VARZEA GRANDE
PROJETO ORLA DO PORTO ALAMEDA JULIO MULLER

RESP. TEC. EXECUCAO: OBRA: ESCADA MENOR

END.: Alameda Julio Muller, s/n
Bairro Alameda / Varzea Grande – MT

AUTORES DO PROJETO: ASSUNTO: DET ARM LAJES

PECAS DETALHADAS
NIVEL RUA – Armadura de punção
NIVEL RUA – Armadura negativa horizontal
NIVEL RUA – Armadura negativa vertical
NIVEL RUA – Armadura positiva horizontal
NIVEL RUA – Armadura positiva vertical

FCK: 250. kg/cm2 – C25
ESCALA: 1:50
ARQUIVO: 03/07/2019
FOLHA No: 08